

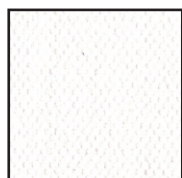
# SEASCAPE

HunterDouglas

## ROLLER BLIND, ROMAN SHADES & PANEL GLIDE 2.4 METRE FABRIC & 100MM, 127MM VERTICAL BLIND FABRIC

Hunter Douglas Limited is pleased to launch the new look SEASCAPE Roller Blind, Roman Shades, Panel Glide and Vertical Blind Fabric. SEASCAPE Fabric is now available in 10 new season organic colours, in 2.4m wide rolls, and 100mm and 127mm Vertical rolls.

### COLOUR RANGE - 10 POPULAR NEW SEASON EARTHY COLOURS



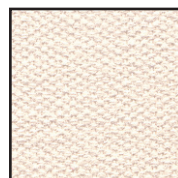
White



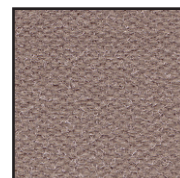
Vanilla



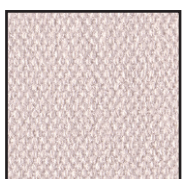
Ice Cream



Bisque



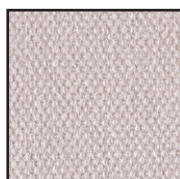
Pistachio



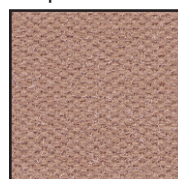
Sesame



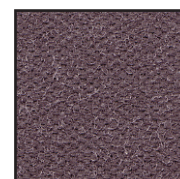
Nude



Mushroom



Latte



Iron

Note: Colours are as close as printing process allows.

### PRODUCT RANGE

### STANDARD FEATURES

Item	Range	Width	Roll Length
82.347.9XX	HF 20 SEASCAPE Fabric	2.4m	20 metres
82.042.9XX	VLF SEASCAPE Fabric	100mm	100m (nom.)
82.043.9XX	VLF SEASCAPE Fabric	127mm	100m (nom.)

SANITIZED® Antimicrobial Protection	✓
Australian Made	✓

### PRODUCT FEATURES AND BENEFITS

10 Colours	Modern colour range designed to suit most Australian interiors.
New 'Plus' Basecloth	New improved look to the weave, and a stiffer handle.
Vertical Pocket Seals	Top and bottom pockets able to be ultrasonically welded, heat welded or sewn.
Superior Ultrasonic Welding Capability	SEASCAPE Vertical Blind Fabric can achieve up to 10kg tear weight in tests conducted on the top seal of the bottom weight pocket, without marking the fabric.*
Light Filtering	All colours in the range allow light to filter through the fabric providing a mid level privacy factor.
Convenient to Stock	Vertical Blind fabric rolls are available in 100mm and 127mm roll sizes. Roller Blind, Roman Shade and Panel Glide fabric rolls are available in a 2.4m width.
Superior Fabric Coating	A minimum of 2 layers of coating are used to provide you with a more durable fabric.
UV resistant	All colours meet Australian Standards for colour fastness to resist fading.
<b>AUSTRALIAN MADE</b>	Proudly made in Australia to support the local Textiles Industry.

\* Hunter Douglas Limited recommends independent testing of SEASCAPE Vertical Fabric on different types of automatic vertical slat machines and welding equipment to establish the correct settings for all colours in the range. Tear weights achieved may vary from machine to machine.

### AVAILABILITY

Available now from Hunter Douglas Limited. Please contact your Hunter Douglas Limited Area Manager for more information.

### SEASCAPE Fabric

#### Composition

Plain woven 100% Polyester fabric

#### Coating

Acrylic Coating

Coloured Sealer → Topcoats [2]

#### Thickness [AS 2001.2.15.1989]

0.65 ± 0.10mm

#### Colourfastness [AS 2001.4.21]

6-7 Blue Scale

#### Stiffness [AS 2001.2.9.1977]

63 ± 10mm

#### Australian Made

Protection/SANITIZED® Antimicrobial Protection

#### Weight

420 gsm ± 20 gsm [finished weight]

#### Roll Weight [AS 2001.2.13.1987]

Roller = 14.8kg

100mm = 3.7kg

127mm = 4.7kg

#### Available Roll Sizes

2.4m x 20m [Nom]

100mm x 100mm [Nom]

127mm x 100mm [Nom]

#### Applications

Suitable for Vertical Blinds, Roller Blinds, Roman Shades and Panel Glides.

#### Cutting Technique Recommended

Ultrasonic, Aeronaut, Knife cut

#### Fabric Guidelines

It is recommended that the fabric be cut in one direction only for Roman Shades, ie. blind width from roll width.

### Care & Cleaning

**General Care** - dusting with a feather duster is all that is required to keep your fabric looking good.

**Stains** - for the removal of dirt and grime, simply wipe fabric skins with a sponge soaked in lukewarm water. If marks are still visible add a little detergent. Then dry gently with a clean cloth.

\* We recommend conducting independent manufacturing trials, as equipment may vary between manufacturers.

#### Fire Retardant (AS 1530.3.1999)

Complies with the General Requirements of the Building Code of Australia for Fire Hazard Properties of materials in buildings. Not suitable for use in parts of buildings with Special requirements, i.e. fire isolated exits; public corridors leading to a fire isolated stairway, passageway or ramp; a patient care area of health care buildings; and in public assembly building (eg theatre or hall) not protected with a sprinkler system.

Ignitability Index	0	[Range 0-20]
Spread of Flame Index	0	[Range 0-10]
Heat Evolved Index	0	[Range 0-10]
Smoke Developed Index	4	[Range 0-10]